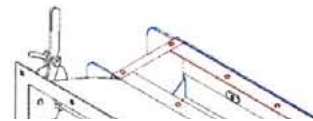
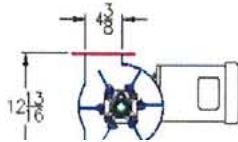
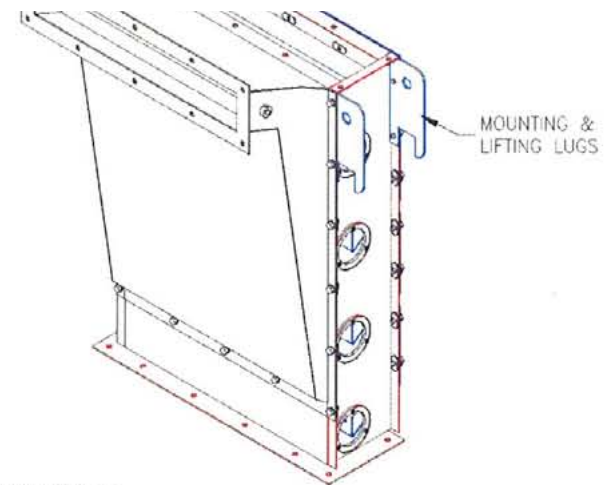
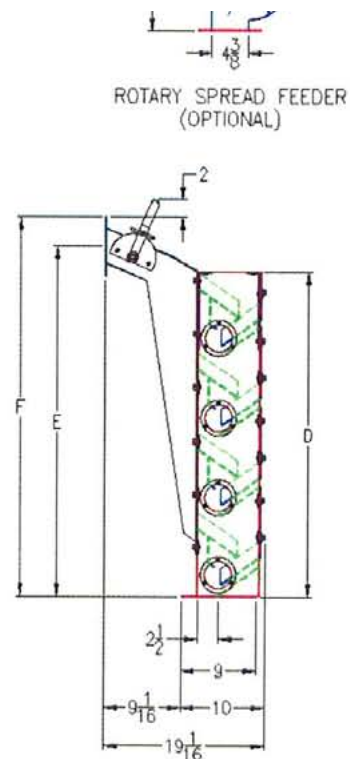
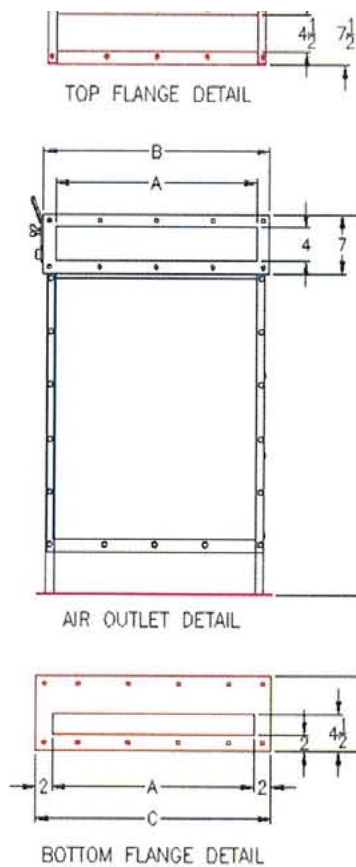




ZIG-A-FLO ASPIRATOR

Model	A	B	C	D	E	F	Ft. of Slot	Separation									Wt.
								Course			Medium			Fine			
								BPH	CFH	CFM	BPH	CFH	CFM	BPH	CFH	CFM	
12ZAF4A	12	15	16	38 1/2	41 1/2	45	4	260	323	787	150	187	640	75	93	400	128
18ZAF4A	18	21	22	38 1/2	41 1/2	45	6	390	485	1180	225	280	965	113	141	603	175
24ZAF4A	24	27	28	38 1/2	41 1/2	45	8	520	647	1573	300	373	1280	150	187	800	223
30ZAF4A	30	33	34	38 1/2	41 1/2	45	10	650	809	1967	375	467	1600	187	233	997	270
36ZAF4A	36	39	40	38 1/2	41 1/2	45	12	780	971	2360	450	560	1920	225	280	1200	317
48ZAF4A	48	51	52	38 1/2	41 1/2	45	16	1040	1294	3147	600	746	2560	300	373	1600	411
60ZAF4A	60	63	64	38 1/2	41 1/2	45	20	1300	1617	3933	750	933	3200	375	467	2000	507
72ZAF4A	72	75	76	38 1/2	41 1/2	45	24	1560	1940	4720	900	1120	3840	450	560	2400	601
12ZAF6A	12	15	16	57 3/8	60 3/8	63 7/8	6	260	323	1180	150	187	960	75	93	600	163
18ZAF6A	18	21	22	57 3/8	60 3/8	63 7/8	9	390	485	1770	225	280	1440	113	141	904	227
24ZAF6A	24	27	28	57 3/8	60 3/8	63 7/8	12	520	647	2360	300	373	1920	150	187	1200	290
30ZAF6A	30	33	34	57 3/8	60 3/8	63 7/8	15	650	809	2950	375	467	2400	187	233	1496	354
36ZAF6A	36	39	40	57 3/8	60 3/8	63 7/8	18	780	971	3540	450	560	2880	225	280	1800	417
48ZAF6A	48	51	52	57 3/8	60 3/8	63 7/8	24	1040	1294	4720	600	746	3840	300	373	2400	545
60ZAF6A	60	63	64	57 3/8	60 3/8	63 7/8	30	1300	1617	5900	750	933	4800	375	467	3000	672
72ZAF6A	72	75	76	57 3/8	60 3/8	63 7/8	36	1560	1940	7080	900	1120	5760	450	560	3600	799





NOTES:

1. All dimensions are in inches.
2. Use of optional Rotary Spreader is recommended on units longer than 18".
3. BPH = BU/HR. Material Flow
CFH = CU.FT./HR. Material Flow
CFM = CU.FT./MIN. Air Flow
4. Standard construction 14 ga. CS housing, 10 ga. AR product contact baffles.

Custom Designed Separation Systems for the Processing Industry

Huntsman, Inc.

2362 Warren Ave. Twin Falls, Idaho 83301
 (877) 733-2214 (208) 733-2214 Fax (208) 733-2240
 www.huntsmaninc.com mail@huntsmaninc.com