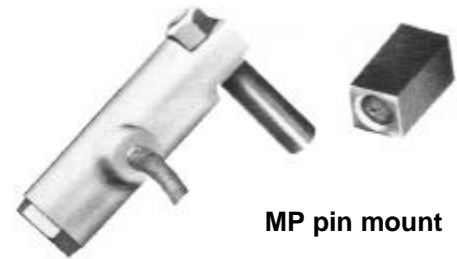


Portable Vibrators

NAVCO® Portable units are lightweight, single-impacting vibrators with high force output. Quality through precision machining and durable materials add prolonged life to these handy units. **NAVCO®** Portables have a variety of uses – they are ideal for Matchplate and shell core machines, concrete forms, and flow chutes

Benefits

- Quickly Changeable
- Easily Portable
- Creates better mold density for smoother surfaces



MP pin mount

Simply weld mounting blocks wherever mild vibration is occasionally needed and move the MP to the location that requires it.

Applications:

- Small Hoppers and Bins or Totes
- Sand Molds
- Flow Chutes



ST series

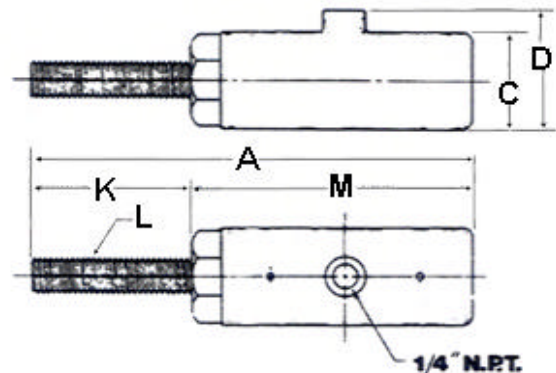
MP pin series Dimensions

Model	Length	Width	Weight
MP 1 ¼"	7 1/16"	2"	7 ¼ lbs.
MP 2"	10 5/8"	2 7/8"	25 ½ lbs.

The ST eliminates the need for bolts or adapter plates.

ST Applications:

- OEMs
- Product Forms



ST series dimensions

Model	A	C	D	K	L	M	Freq. @ 70 psi	Air Cons. @ 60 psi
ST ¾"	6"	1 ¼"	1 11/16"	2"	½" – 13 NC	4"	12,400 VPM	3.0 CFM
ST 1"	7"	1 ½"	1 15/16"	2"	5/8" – 11 NC	5"	10,300 VPM	3.5 CFM
ST 1 ¼"	8 7/8"	2"	2 7/16"	3 ¼"	¾" – 10 NC	5 5/8"	8,150 vpm	3.8 CFM

Small, Quiet, Portable Vibration

Huntsman, Inc. ▼ 2362 Warren Ave. ▼ Twin Falls, Idaho 83301

(877) 733-2214 ▼ (208) 733-2214 ▼ Fax (208) 733-2240
 www.huntsmaninc.com ▼ mail@huntsmaninc.com