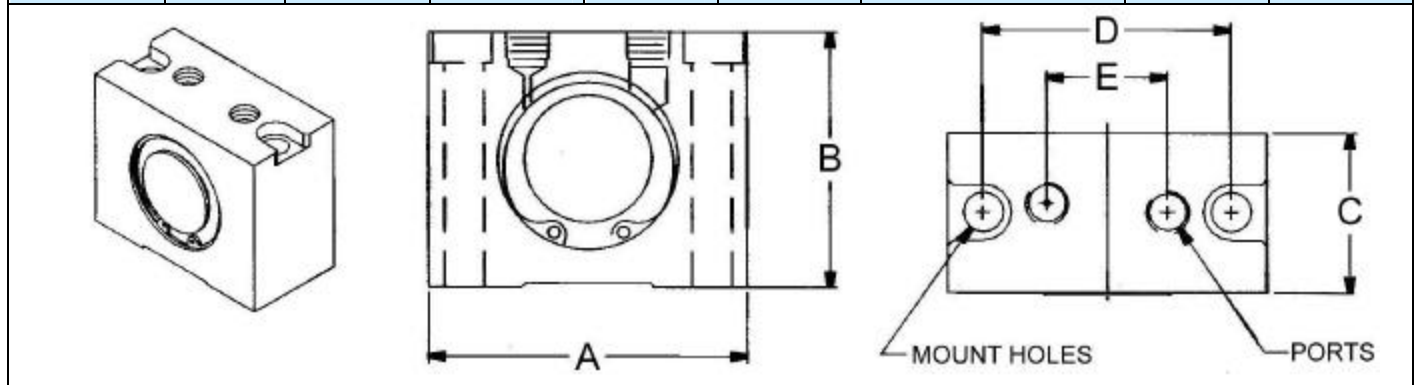


# NAVCO® Turbine Vibrators

## Dimensions

\*In inches

| Vibrator | A    | B    | C    | D     | E     | Mount hole diameter | Port Size | Weight (Lbs.) |
|----------|------|------|------|-------|-------|---------------------|-----------|---------------|
| NGT – 12 | 2.50 | 2.00 | 1.25 | 1.938 | .944  | 5/16                | 1/8 NPT   | 0.7           |
| NGT – 16 | 3.25 | 2.5  | 1.62 | 2.563 | 1.228 | 7/16                | 1/4 NPT   | 1.5           |
| NGT – 25 | 5.0  | 4.0  | 2.5  | 3.875 | 1.890 | 5/8                 | 3/8 NPT   | 5.3           |



## Specifications

| NGT – 12 |       |      |       |
|----------|-------|------|-------|
| Pressure | Speed | Flow | Force |
| PSI      | RPM   | SCFM | Lbs   |
| 10       | 15500 | <1.0 | 40    |
| 20       | 24500 | <1.0 | 102   |
| 30       | 30000 | 1.2  | 153   |
| 40       | 32000 | 1.4  | 174   |
| 50       | 34000 | 1.6  | 196   |
| 60       | 36000 | 1.8  | 220   |
| 70       | 38000 | 2.0  | 245   |
| 80       | 40000 | 2.1  | 272   |

| NGT – 16 |       |      |       |
|----------|-------|------|-------|
| Pressure | Speed | Flow | Force |
| PSI      | RPM   | SCFM | Lbs   |
| 10       | 14100 | <1.0 | 100   |
| 20       | 18100 | 1.3  | 160   |
| 30       | 20750 | 1.5  | 210   |
| 40       | 23550 | 1.6  | 270   |
| 50       | 25000 | 1.8  | 300   |
| 60       | 27230 | 1.9  | 360   |
| 70       | 28800 | 2.0  | 400   |
| 80       | 30000 | 2.2  | 440   |

| NGT – 25 |       |      |       |
|----------|-------|------|-------|
| Pressure | Speed | Flow | Force |
| PSI      | RPM   | SCFM | Lbs   |
| 10       | 9700  | 2.8  | 260   |
| 20       | 12200 | 3.4  | 415   |
| 30       | 13950 | 3.8  | 541   |
| 40       | 15100 | 5.0  | 630   |
| 50       | 16550 | 6.5  | 760   |
| 60       | 17600 | 8.5  | 860   |
| 70       | 18400 | 10.0 | 940   |
| 80       | 19000 | 11.5 | 1000  |

## Mount Kit

Dimensions in Inches

| Model    | Channel Size    | Channel Length | Hex Head Cap Screw<br>(furnished with vibrator) |
|----------|-----------------|----------------|---|
| TMN – 12 | 2 x 1 x 3/16    | 24             | 1/4 unc x 2 1/4                                 |
| TMN – 16 | 3 x 1 1/2 x 1/4 | 36             | 3/8 unc x 2 3/4                                 |
| TMN – 25 | 3 x 1 1/2 x 1/4 | 48             | 1/2 unc x 4 3/4                                 |



Use turbine mount kits for quick and easy installation. Kits include a channel iron (threaded to accept fasteners), hose barb, and hose clamp. All turbine vibrators are shipped complete with muffler and fasteners.

**Huntsman, Inc. ▼ 2362 Warren Ave. ▼ Twin Falls, Idaho 83301**

(877) 733-2214 ▼ (208) 733-2214 ▼ Fax (208) 733-2240  
www.huntsmaninc.com ▼ mail@huntsmaninc.com