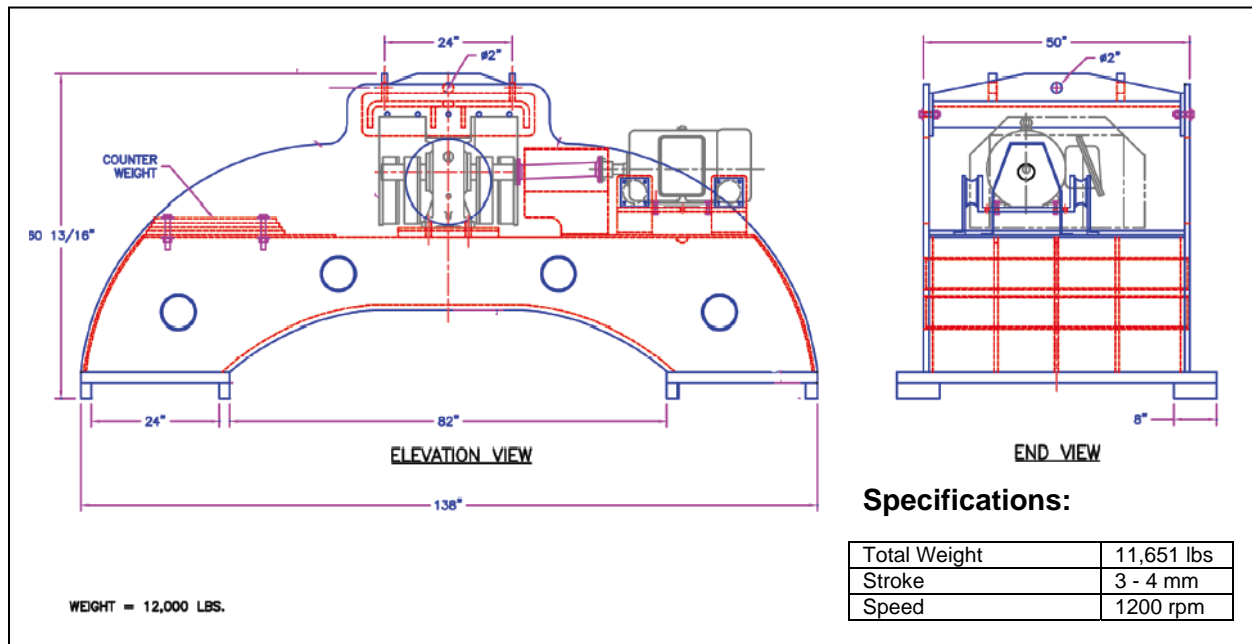


Overhead Car Shaker

For Unloading Open Top Railcars



The **NAVCO**® Overhead Car Shaker is designed to facilitate unloading of open top, bottom discharge railcars. It is a heavy-duty unit designed for the most difficult unloading applications. When operating, (at 1200 rpm) the Overhead Car Shaker lifts 3-4 mm and falls back onto the railcar sidewalls. The falling action creates an impulse throughout the railcar – initiating and maintaining material flow for the most stubborn material.



- Benefits:**
- ◆ Unitized Exciter Drive:
 - ◆ Cardan Shaft Drive:
 - ◆ Long Service Life :
 - ◆ Rugged Construction :
 - ◆ Isolation System:

- Simply bolts to mounting base
- No belts to replace or adjust
- Constructed of stress relieved heavy steel plate
- Designed for continuous 24 hour duty
- Reduces vibration transmitted to drive motor

Huntsman, Inc.
 2362 Warren Ave. ▼ Twin Falls, Idaho 83301
 (877) 733-2214 ▼ (208) 733-2214 ▼ Fax (208) 733-2240
 www.huntsmaninc.com ▼ mail@huntsmaninc.com



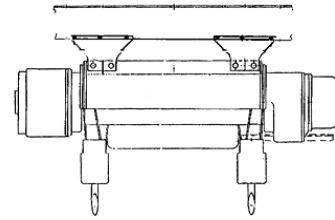
NAVCO OVERHEAD CAR SHAKER COMPARISON

Feature	NAVCO	Benefits	Others	Uh-oh!
Construction	¾" – 1" thick mild steel side sheets	Extremely heavy duty	¼-3/8" thick mild steel (est)	Construction much lighter
Drive	Gear driven, linear motion, oil bath, sealed gear box	Drive designed specifically for vibrating equipment applications	Grease or lubricated bearings used in inclined vibrating screens	These type of bearings have been used in screen machines but seals will break and maintenance is high
Bearing Shaft	Set very close with short shaft for strength and reliability	No shaft deflection	Long shaft in torque tube	Lots of deflection can detract from bearing life
How Driven	Flexible in-line cardan shaft	Like a vehicle drive shaft, can take shock, long lasting, HP efficient	V-belt driven	Gets loose, lots of deflection, high maint. required, slippage, burning, loss of HP efficiency.



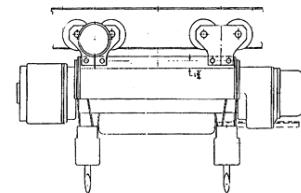
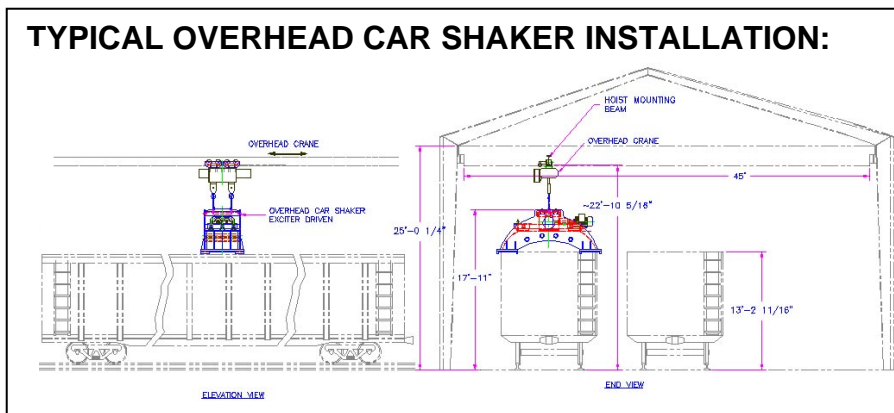
OPERATION:

A hoist assembly is a required accessory for handling and safe placement of the Overhead Car Shaker on the railcar sidewalls.



Stationary Hoist

TYPICAL OVERHEAD CAR SHAKER INSTALLATION:



Motorized Trolley with Hoist

Huntsman, Inc. ▼ 2362 Warren Ave. ▼ Twin Falls, Idaho 83301

(877) 733-2214 ▼ (208) 733-2214 ▼ Fax (208) 733-2240

www.huntsmaninc.com ▼ mail@huntsmaninc.com