

Westrup conditioning equipment tailored for vegetable seed

The Westrup GSU-600 Precision Air/Screen Cleaner

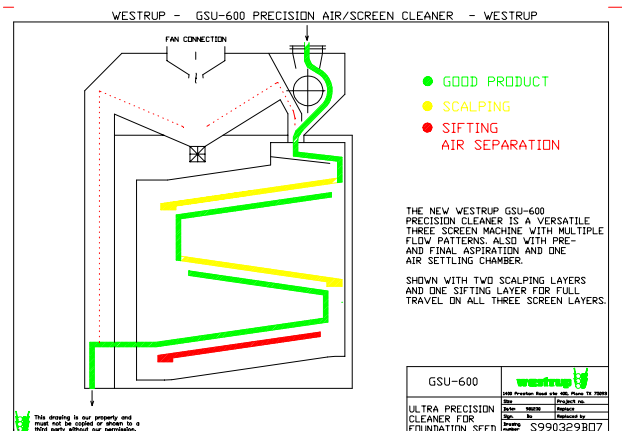
The standard features are: 6.4" diameter steel feed roll, pre-aspiration and tall final air column, air settling chamber with calibrated air valve controls and right side cull discharge, fixed speed eccentric drive and main shoe with a total of **three main screen layers**.



Westrup GSU-600: With a highly efficient air system, it is the perfect machine for small lots of high-value vegetable seed.

Multiple Flow Patterns

The machine offers a Z-shaped screen configuration with several flow patterns. The operator can scalp on the first screen layer, then scalp/sift/size on the second layer and finally sift/size on the bottom screen layer. The screen layers are each 23.5" wide by 39" long.



GSU standard flow pattern: Series flow to one scalping layer, followed by another scalping layer in the return and a sifting layer in the bottom. The machine capacity is rated at 250-350 lbs per hour on most vegetable seed varieties.

Westrup Optional Features

The GSU-600 can be equipped with the following options:

- Vibrator feeder instead of steel feed roll
- Quick change screen access door
- Electronically variable speed on the eccentric and the feed roll drives
- Electronic air valve controls
- Adjustable depth final air column with rise air screen
- Adjustable stroke length eccentric bearings

**HAND IT OVER TO WESTRUP, YOUR
WORLDWIDE INNOVATOR IN VEGETABLE
AND FLOWER SEED CONDITIONING.**

www.huntsmaninc.com

Huntsman Inc., 2362 Warren Ave., Twin Falls ID 83301, USA
Tel: 888-812-3377, Fax: 208-733-2240, E-mail: mail@huntsmaninc.com