

# self contained BAG PLANTS

by



The idea of Self Contained Bagging is to supply you with all the necessary components for a *complete* and *successful* bag filling operation. Although designed to your individual requirements, the typical system consists of a bag filling scale, bag closing conveyor, bag closing device, air compressor, surge hopper, and control panel all mounted and installed in a specially built container. Once the container arrives at the job site, the bag plant is quickly and easily installed so that the bag filling operation can begin. Your Self Contained Bagging plant is completely tested at our factory prior to shipment.



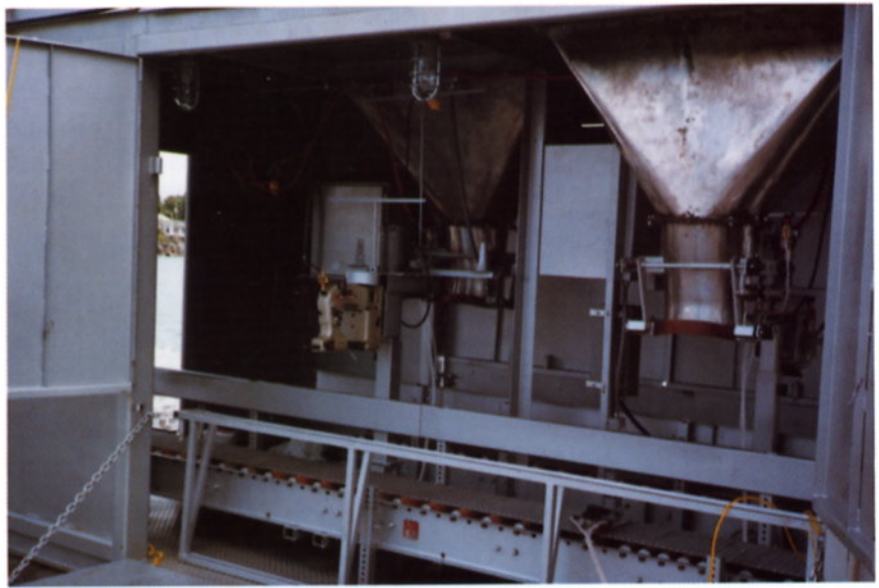
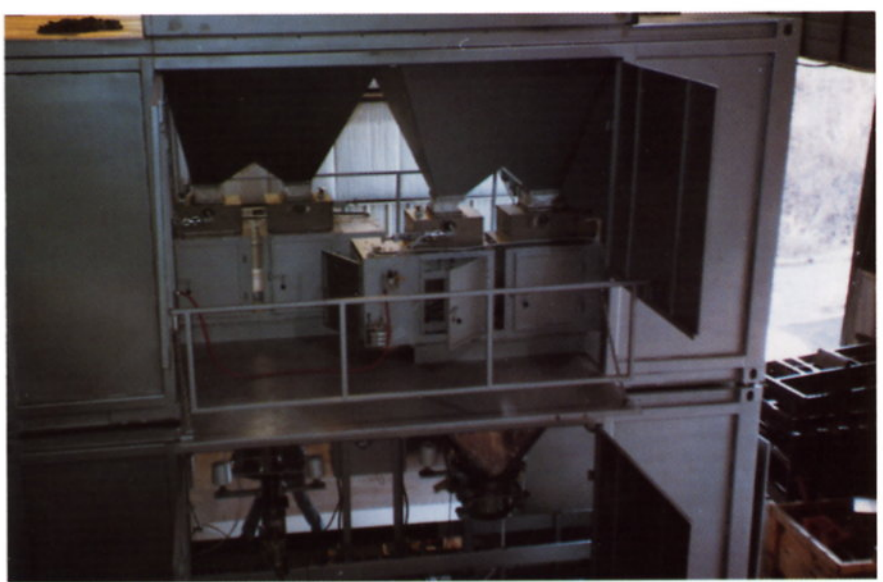
*Filling 50 kg. polywoven bags with urea portside in Puerto Cabello, Venezuela*

# *self contained* **BAG PLANTS**

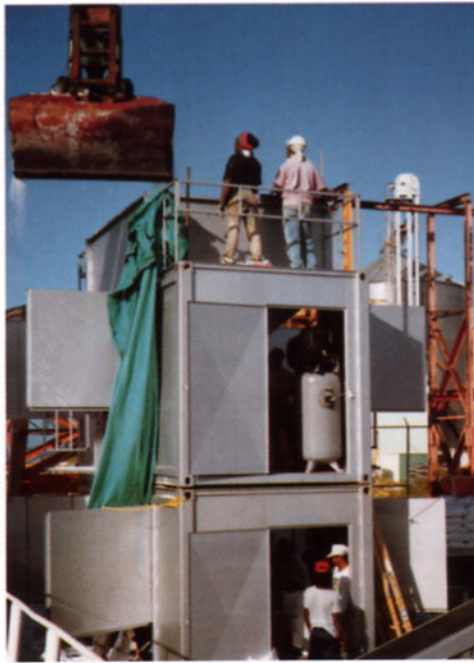
... always include two independent bag filling lines with speeds up to 100 metric tons per hour filling 50 kg. bags. Complete systems have included diesel generators for power, internal and external lights for 24-hour operation, and a complete set of replacement parts.

*Top right photo shows a self contained bag plant with Duplex CM-780 net weigh bagging scales. Photo at right shows close-up of bottom half of bag plant with air operated dust-tight bag spout, stainless steel wire mesh conveyor, industrial sewing head and internal lights.*

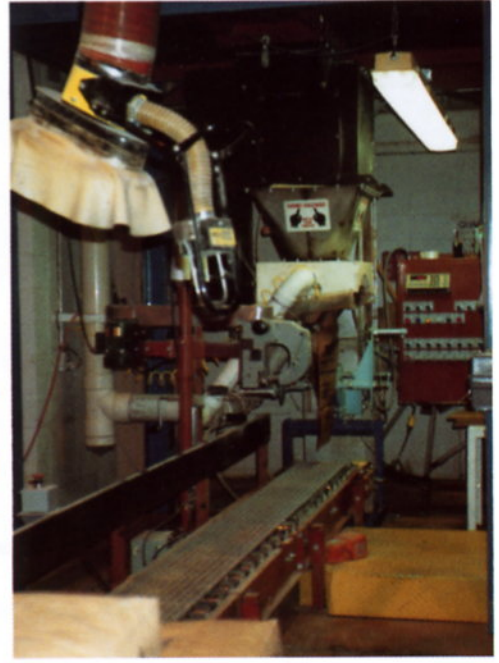
Currently a majority of self contained bag plants are being used for bagging urea, fertilizers, corn, milo, wheat and bone meal along side ships at final destination. Current installations include Puerto Cabello-Venezuela, Puntarenas-Costa Rica, Haiti, St. Lucia, Barbados, Nouakchott-Mauritania, Dakar-Senegal, Port Sudan-Sudan, Toamasina-Madagascar, Beria-Mozambique, Mombassi-Kenya, and Rangoon-Burma.



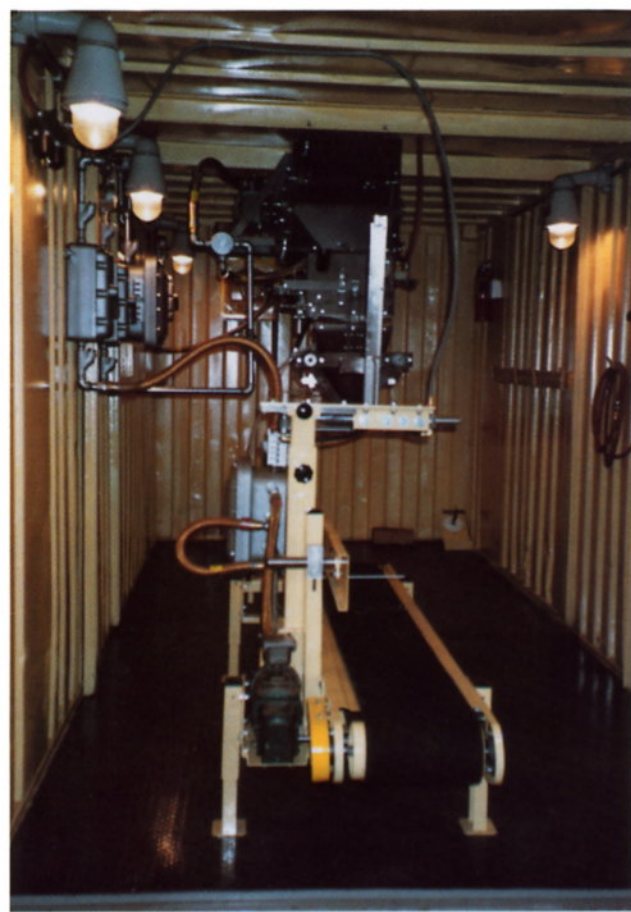
*Self Contained Bag Plant being operated in St. Lucia*



*Self Contained Bag Plant being loaded by ship's grab in Barbados*



*Self Contained Bag Plant bagging dehydrated eggs on a 15 by 8 foot platform in Verona, Missouri, U.S.A.*



*Inside view of a plant bagging hazardous waste. Supplied with explosion-proof controls and shown with a twist tie arrangement for the bags*

E.S.P. builds self contained bagging units for installation inside plants as well as completely portable units. Units have been supplied in 45-foot trailer bodies, flat plates with no side covers, and flat bed trailers. Units have included both gross weigh and net weigh bagging scales, single and double lines, sewing heads, heat sealers, and twist tie machines. Electrical ratings are available in Nema 12 dust-tight, Nema 7 and 9 explosion-proof, and Nema 4 watertight. If your product is sand, hazardous waste, fertilizer, dehydrated eggs, grain, seed or anything else that goes into a bag, E.S.P. can design a self contained bag plant for you.



*A 45-foot trailer containing the entire bag filling operation being loaded pneumatically*

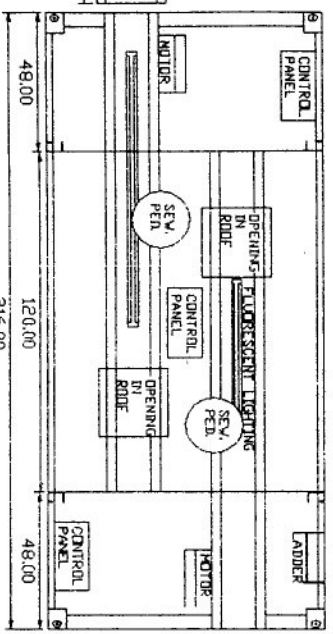
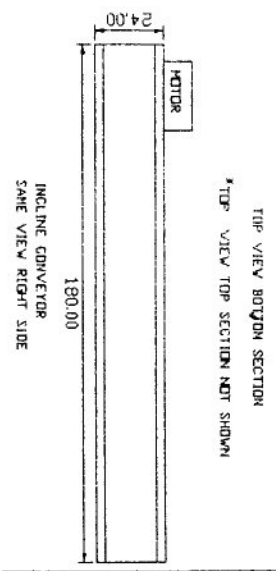
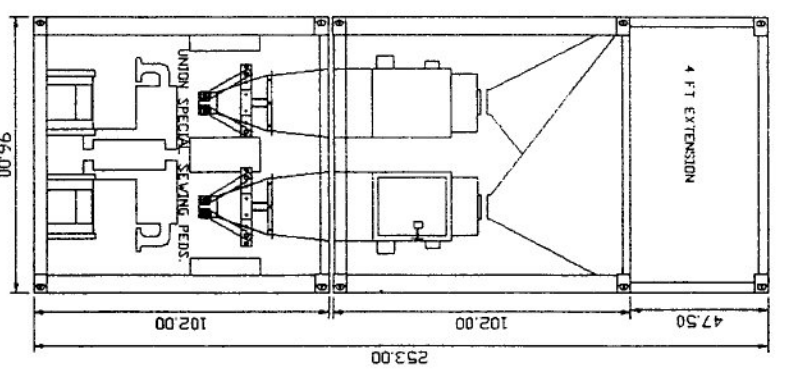
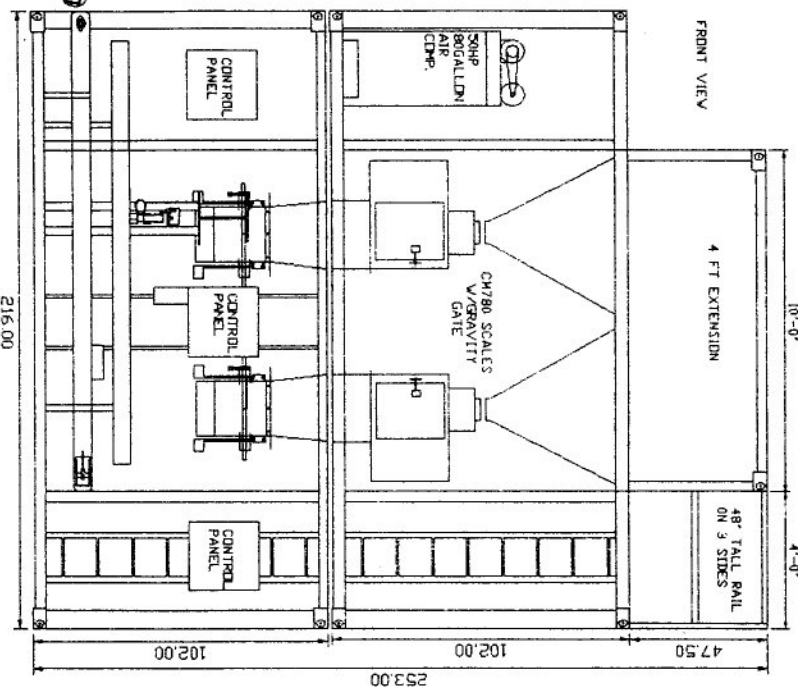
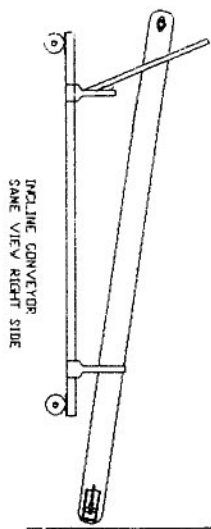
Regardless of what your individual requirements are, E.S.P. can build a self contained bag plant for you. Very seldom are two units identical. The total cost of the container concept is far less than purchasing individual components from different sources. There is always important time savings in self contained over individual component assemblies.



*Typical sea/land container supplied by customer, modified by E.S.P. to house a complete bagging operation for handling hazardous waste products.*

**DIMENSIONS OF A  
TYPICAL**

**self contained  
BAG PLANT**



FRONT VIEW

END VIEW



**Express Scale Parts, Inc.**

E.S.P. manufactures our own containers for housing self contained bag plants. They are specially designed for operator efficiency and ease in placing our equipment inside. Ours are generally 18½ feet long, 8 feet wide, and 8½ feet tall. they are sized to be transported on highways without over-width or weight permits. Because they are slightly taller and shorter, they cannot travel as standard ISO containers.

**Huntsman, Inc.**  
2362 Warren Ave. Twin Falls, Idaho 83301  
(877) 733-2214 (208) 733-2214 Fax (208) 733-2240  
www.huntsmaninc.com mail@huntsmaninc.com