

# WESTRUP NEWS 2001

OVER THE PAST 40 YEARS WE HAVE INSTALLED OUR MACHINES IN MORE THAN 100 COUNTRIES



## The New Westrup AP-1500 Series General Purpose Cleaner

The new AP-1500 is the latest addition to the Westrup Cleaner Line. The machine has two shoes with a total of five screen layers, each 59" wide by 94" long for a total screen area of 193.7 square feet. The standard screen configuration is split flow to two parallel scalping layers in the upper shoe and split flow to three sifting layers in the lower shoe for high capacity cleaning. The machine also includes 6.4" diameter steel feed roll with adjustable gate and brush seal, pre- and final aspiration, two air settling chambers with cull auger discharges, calibrated air valve controls and top mounted fan with 10 hp motor. The eccentric drive features heavy duty bearings and a 3 hp drive motor. The AP-1500 is tailored for industrial type precision cleaning at 500 bph on most grains and pulses, but can also be run as a pre-cleaner at up to 1,500 bph.

Hand it over to Westrup, your worldwide innovator in grain conditioning

# Westrup equipment tailored for industrial seed conditioning

## The New AP-1500 General Purpose Air/Screen Cleaner

Westrup is proud to introduce the new AP machine rated at 600 bph on soybeans. The standard features are:

- Custom made steel channel frame with two counterbalanced shoes and a total of **five screen layers** each 59" (or 49" or 39") wide by 94" long
- 6.4" diameter steel feed roll with fixed speed drive and adjustable feed gate with brush seal
- Aspiration system with pre- and final air, two settling chambers with inspection windows and right side discharge cull conveyors, calibrated air valve controls, false air valve and top mounted fan with 10 hp motor
- Eccentric drive with heavy duty bearings and 3 hp motor with fixed speed

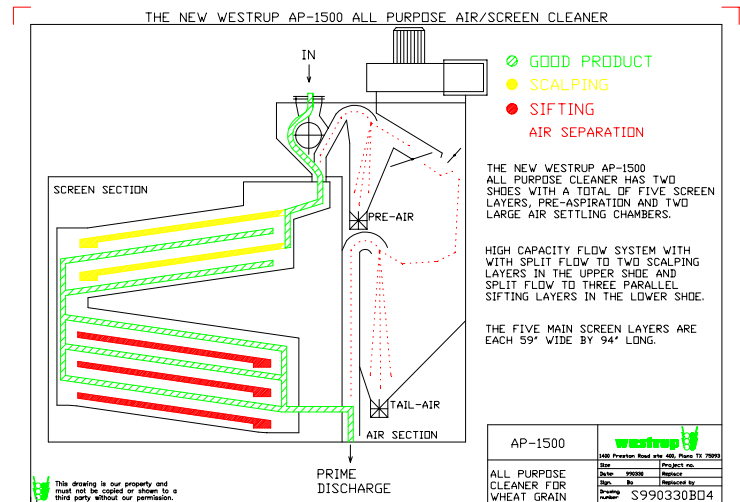


**Westrup AP-1500:** With five screen layers and an efficient air system, it is the perfect machine for small/medium sized seed operations.

Please note the location of feed inlet, scalp/sift discharges, cull auger discharges and prime product discharge. Your new AP machine will slide in to replace an old Clipper 298 machine. But your new machine will have 193.7 sq ft of screen area compared with 90 sq ft on the Clipper machine. The AP will not only give you higher capacity; The machine is designed for ball screen cleaning and incorporates all the modern Westrup design features which gives you the quality and reliability you require.

## High Capacity Screen System

The machine offers a high capacity flow system. The operator can run the machine as a precision cleaner rated at 600 bph or alternatively as a pre-cleaner rated at up to 1,500 bph on most seeds. We can also supply a flow divider for sifting/sizing on the second screen layer in the upper shoe.



**High Capacity Flow Pattern:** Shown with split flow to two parallel scalping layers in the upper shoe and split flow to three parallel sifting layers in the lower shoe. The machine is available in three different widths depending on capacity requirements.

## Westrup Optional Features

The AP can be equipped with the following options:

- Vibrator feeder with adjustable vibration control
- Quick change screen access doors
- Steel lined screen tracks with rubber seal
- Inverter drives for eccentric and feed roll
- Larger heavy duty fan with 15 hp motor

Your new machine will be backed by one of the world's leading manufacturers of grain conditioning equipment. Over the past 40 years we have installed our machines in more than 100 countries. Our machines are known for their **flexibility, accuracy, reliability and high capacity.**

**HAND IT OVER TO WESTRUP, YOUR WORLDWIDE INNOVATOR IN GRAIN CONDITIONING.**

Huntsman Inc. 2362 Warren Ave. Twin Falls, ID 83301  
Tel: 208-733-2214 Fax: 208-733-2240 E-mail: mail@huntsmanc.com