

# SiloPatrol® ActiveX® Controls

- ▼ *Basic or Full-Featured Versions Available*
- ▼ *Industry-Standard Software Technology*
- ▼ *Integrate Sensors to PLC/PC Control System*
- ▼ *Eliminate Analog I/O Cards*
- ▼ *Saves Time and Reduces Wiring Cost*

ActiveX® is a general set of technologies developed by the Microsoft Corporation that allow users to reuse code and link individual programs together. ActiveX® is based upon COM (Component Object Model) technology and was initially developed to facilitate the development of internet-based applications. COM is an extension of a technology called OLE (Object Linking and Embedding).

ActiveX® has become a standard software interface, which maximizes the reuse of software components. ActiveX® has allowed software vendors to produce applications that can be utilized by a wide variety of users. The application of ActiveX® in control system automation is the process of controlling one program from another.

When using Monitor's ActiveX® Controls, **SiloPatrol®** inventory monitors can be integrated into a PLC, or other type of control system, without the use of analog signals. The **SiloPatrol** Model SMU smart sensor uses RS-485 multi-drop communications which, in conjunction with the use of the available ActiveX® Controls, can significantly cut the cost of installation by simplifying wiring and eliminating the need for analog I/O cards.

The communication driver contained within Monitor's ActiveX® Controls manages the message handling with the SMUs. The specific ActiveX® Controls provided allow the control system designer to place **SiloPatrol** inventory monitoring functions directly into the system's operator interface screens and control the SMU(s). In Screen Design Mode of your ActiveX® Container (the control system software), the available sensor functions can be placed where they are needed.

Monitor's ActiveX® Controls are designed to work with virtually any ActiveX® container program such as Wonderware®, Intellution®, Cimplicity® and RSView®.

**NOTE:** A control system software developer competent in the use of ActiveX® controls within the control system operating software is required for implementation and use of the **SiloPatrol** ActiveX® Controls.



**SiloPatrol®**



"SETTING THE STANDARD FOR SUPPLIER EXCELLENCE"

# BULLETIN 343C SiloPatrol®

Monitor offers two ActiveX® Controls versions: basic and full-featured. Each can be used to request and read measurements and to read status and error messages. The full-featured version will further save time for control system designers by providing ActiveX® Controls that will convert and calculate units of measure, construct bin icons and setup alarms.

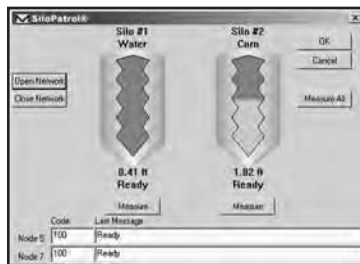
## MODEL SELECTION

The ActiveX® Controls for use with the **SiloPatrol®** SMUs is available in two versions. Both the basic and full-featured versions include the communication driver required to interface with the sensors over the RS-485 multi-drop network.

### BASIC VERSION

This includes the following ActiveX® Controls:

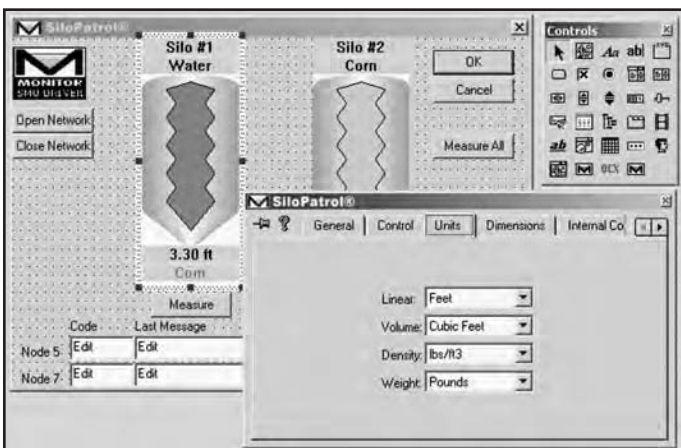
- ▼ Measurement request to a specific SMU
- ▼ Distance measurement from the SMU
- ▼ SMU status messages
- ▼ SMU error messages



### FULL-FEATURED VERSION

This includes the ActiveX® Controls in the Basic version as well as the following:

- ▼ Measurement calculations (convert distance to level, volume and weight)
- ▼ Units of measure conversion (metric and U.S. units)



- ▼ Bin setup with bin type, dimensions and color selection
- ▼ Four level alarms per bin
- ▼ "Measure All" command function

## USE OF VOLUME/WEIGHT CALCULATIONS

The SMU sensor makes a direct measurement of the distance between the sensor and the material surface. It does not measure the volume/weight of the material. ActiveX® Controls may be used to perform calculations to display the volume/weight. These calculations are based upon the distance measurement and the vessel dimensions and material bulk density entered by the user during setup.

**NOTE:** The calculated volume and weight values should be considered "estimates". Monitor Technologies LLC accepts no responsibility for the accuracy of the calculated and displayed volume and weight values.

## ORDERING INFORMATION

- 6-8901-1 Basic version of ActiveX® Controls for **SiloPatrol®** Model SMU smart sensor consisting of ActiveX® controls for initiating a measurement request, obtaining the measured value, SMU status and SMU error messages.
- 6-8902-1 Full-Featured version of ActiveX® Controls for **SiloPatrol®** Model SMU smart sensor consisting of ActiveX® controls for initiating a measurement request, obtaining the measured value, SMU status and error messages, measurement conversions and calculations, bin dimensions and color, level alarms and a broadcast measurement request.

## WARRANTY

Monitor Technologies LLC warrants the licensed software media to be free from defects in workmanship and materials. For a period of ninety (90) days from the date of installation Monitor Technologies LLC will replace the software media without charge if determined to be defective. The Purchaser must give notice of any defect to Monitor Technologies LLC within the warranty period, return the software product intact and pre-pay transportation charges. The obligation of Monitor Technologies LLC under this warranty is limited to the replacement of the software media. This warranty shall not apply to any product that is repaired or altered outside of Monitor Technologies LLC factory, or which has been subject to misuse, negligence, accident or incorrect installation. Monitor Technologies LLC reserves the right to change the design and/or specifications without prior notice.

ActiveX® is a registered trademark of the Microsoft Corporation  
 RSView® is a registered trademark of Rockwell Automation  
 Wonderware® is a registered trademark of Wonderware Corporation  
 Intellution® is a registered trademark of Intellution, Inc.  
 Cimplicity® is a registered trademark of General Electric Company