

**MODEL 1200  
SEMI-AUTOMATIC  
PALLETIZING  
SYSTEMS**

**BY**



**Huntsman, Inc.**

2362 Warren Ave. Twin Falls, Idaho 83301  
(877) 733-2214 (208) 733-2214 Fax (208) 733-2240  
www.huntsmaninc.com mail@huntsmaninc.com



*Operator control panel shown with optional check weigh system*



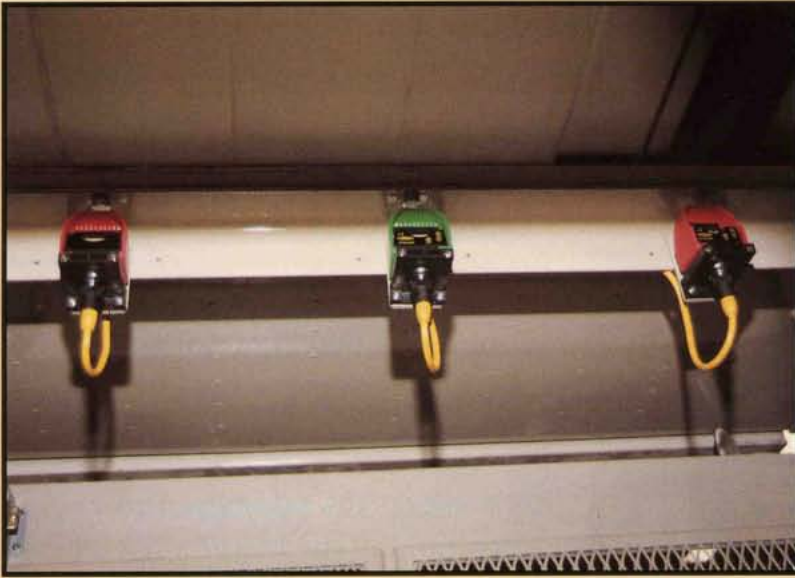
*Operator view of fixed and moveable air flotation tables*



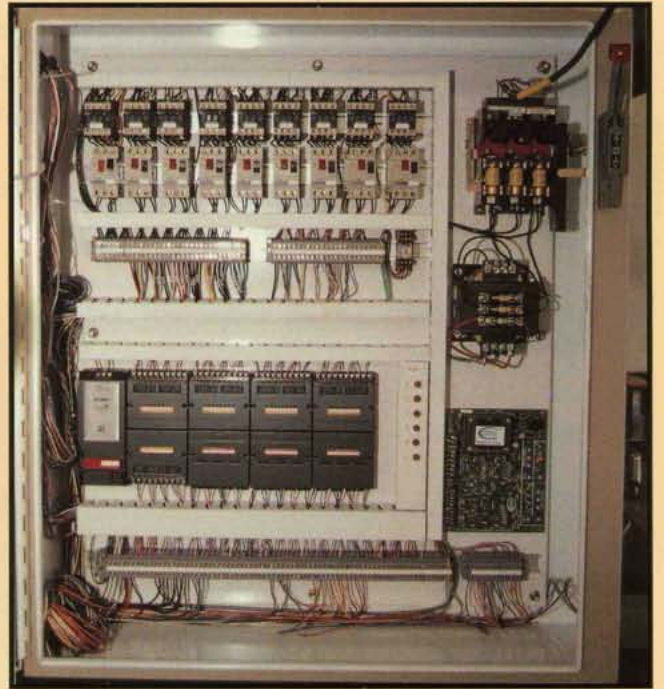
*Accumulation conveyors bringing flattened bags onto optional check weigh system*



*View of bag entering flattening conveyor system shown with standard safety cages*



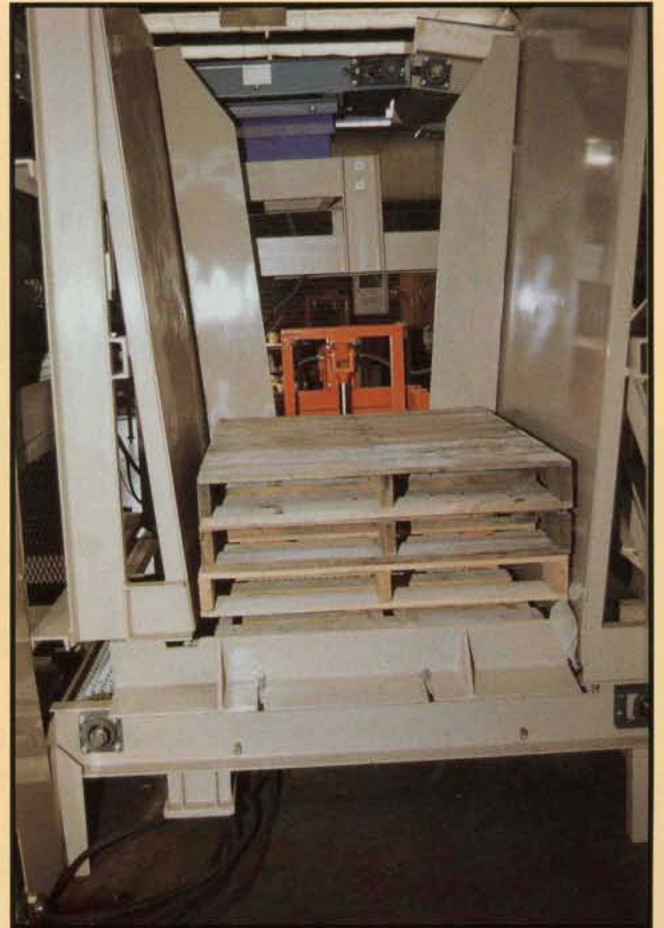
*Finger switches mounted on operator access area for movement of air flotation table.*



*PLC controls with motor starters in NEMA 12 enclosure.*



*Moveable conveyor with pallet being filled.*



*Empty pallet dispenser*

## **SEMI AUTOMATIC PALLETIZER**

The **STANDARD 1200 PALLETIZER** can be designed around your plant layout utilizing our standard components. For 3,000 lb (48" x 48") pallet capacity. The basic system includes:

- Bag incline/flattening conveyor (18 ft x 2 ft)
- Bag accumulation/bag staging conveyor (11 ft x 2 ft)  
Includes brake motor and variable speed drive  
Overall conveyor length extends to 16 ft 9 in with the addition of a slip sheet dispenser
- Empty pallet magazine and tine system
- Empty pallet live roller conveyor (8 ft 3 in x 52 in effective width/ 35 fpm)  
Overall conveyor length extends to 15 ft with the addition of a slip sheet dispenser
- Elevator conveyor and lift device (5 ft 3 in x 52 in effective width/ 35 fpm)
- Dual stage live roller filled pallet conveyor (10 ft 6 in x 52" effective width/ 35 fpm - 2 drives)
- Palletizer main housing (3/8 grade A36 structural steel)
- Operator access area with ladder and safety rails
- Stationary air table, stainless steel
- Moveable air table with adjustment guides, stainless steel
- Pneumatic side compression
- Complete electric and hydraulic system
- NEMA 12 enclosures and all motor starters
- Safety switches, alarms, E-stops, cages and inner locks for entire system
- Allen Bradley PLC controls
- Complete epoxy coatings

The **CORROSIVE RESISTANT 1200 PALLETIZER** can be designed around your plant layout utilizing our standard components and the following corrosive resistant features.

For 3,000 lb (48" x 48") pallet capacity.

- Bag incline/flattening conveyor (18 ft x 2 ft)
- Bag accumulation/bag staging conveyor (11 ft x 2 ft)  
Includes brake motor and variable speed drive  
Overall conveyor length extends to 16 ft 9 in with the addition of a slip sheet dispenser
- Empty pallet magazine and tine system
- Empty pallet live roller conveyor (8 ft 3 in x 52 in effective width/ 35 fpm)  
Overall conveyor length extends to 15 ft with the addition of a slip sheet dispenser
- Elevator conveyor and lift device (5 ft 3 in x 52 in effective width/ 35 fpm)

- Dual stage live roller filled pallet conveyor (10 ft 6 in x 52" effective width/ 35 fpm - 2 drives)
- Palletizer main housing (3/8 grade A36 structural steel)
- Operator access area with ladder and safety rails
- Stationary air table, stainless steel
- Moveable air table with adjustment guides, stainless steel
- Pneumatic side compression
- Complete electric and hydraulic system
- Safety switches, alarms, E-stops, cages and inner locks for entire system
- Allen Bradley PLC controls

**Corrosion resistant features:**

- PVC bag conveyor rollers with sealed Delrin bearings & stainless shafts
- Stainless steel / UHMW bearings throughout system
- Washdown motors
- NEMA 4X enclosures and all motor starters
- Galvanized pallet rollers with sealed bearings and stainless shafts
- Stainless chain tighteners and splitters
- Stainless steel fasteners
- Complete epoxy coatings

**Includes:** Technician's labor for help and training (3 business days) at the time of start up. Airfare and expenses will be the responsibility of the customer.

**Capabilities:** Up to 3,300 lb pallet load and a 48" x 48" x 78" filled pallet dimension. Additional upgrades are available.

**Electrical requirements:** 460-3-60 / 100 amp service

\*Step down transformer included for control voltage

Note: 575 V will require a step down transformer to be installed at customer's site.

**Pneumatic requirements:** 15 CFM @ 100 PSI (including slip sheet dispenser)

**Options:**

Check weigh system, complete with reject conveyor

Check weigh scale only

Automatic slip sheet dispenser

Omit flattener portion of conveyor (deduct)

Semi or fully automatic stretch wrap machines

Ability to accommodate up to a 90 inch overall pallet height