



CHANTLAND

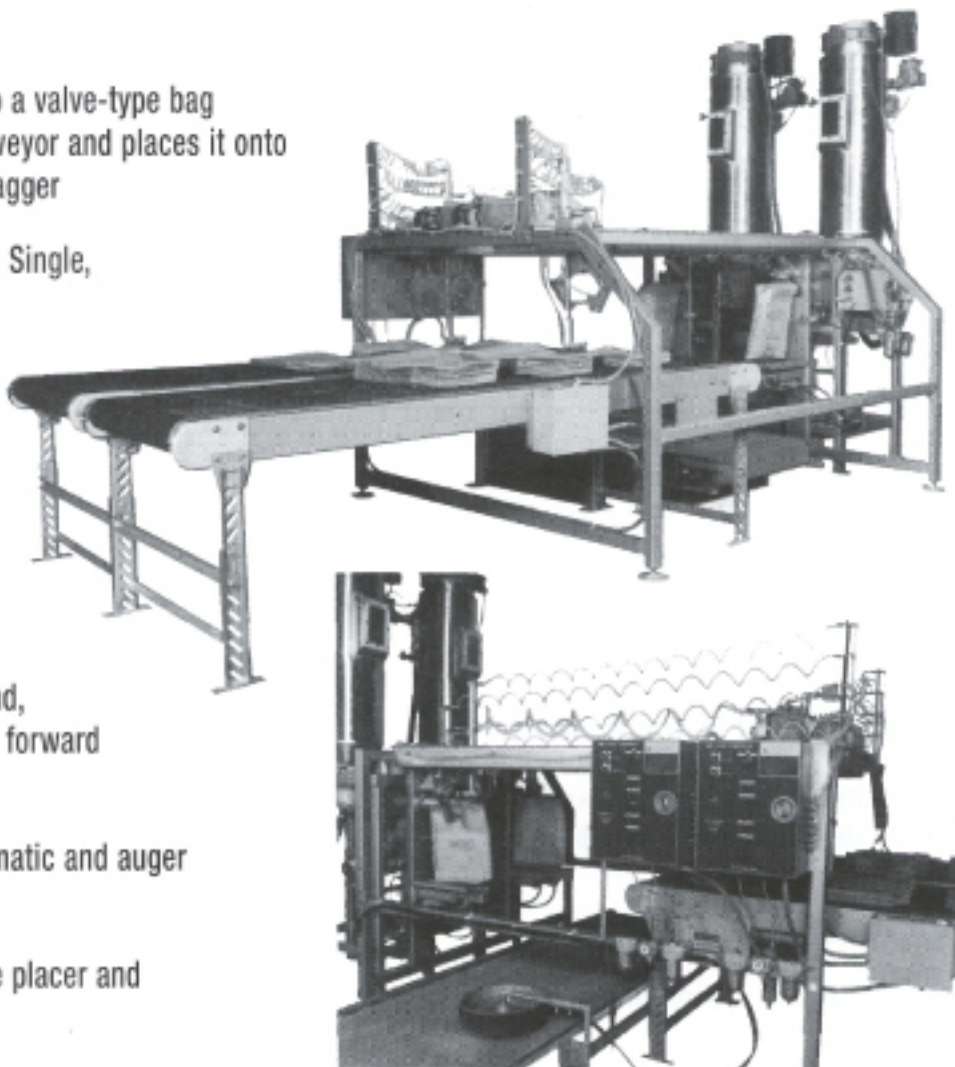
PVS

Material Handling Solutions

SPOUT-A-MATIC

MODEL 4227

- Automatically picks up a valve-type bag from the indexing conveyor and places it onto the spout of a valve bagger
- Two spout unit shown. Single, three and four spout units are available
- Unit will place kraft paper and plastic valve bags
- Adjustable to most bag sizes
- Available with left-hand, right-hand, or straight forward infeed (shown)
- Adaptable to all pneumatic and auger type valve baggers
- Standard units include placer and indexing conveyor



HUNTSMAN, INC
Packaging, Processing and Dust Control

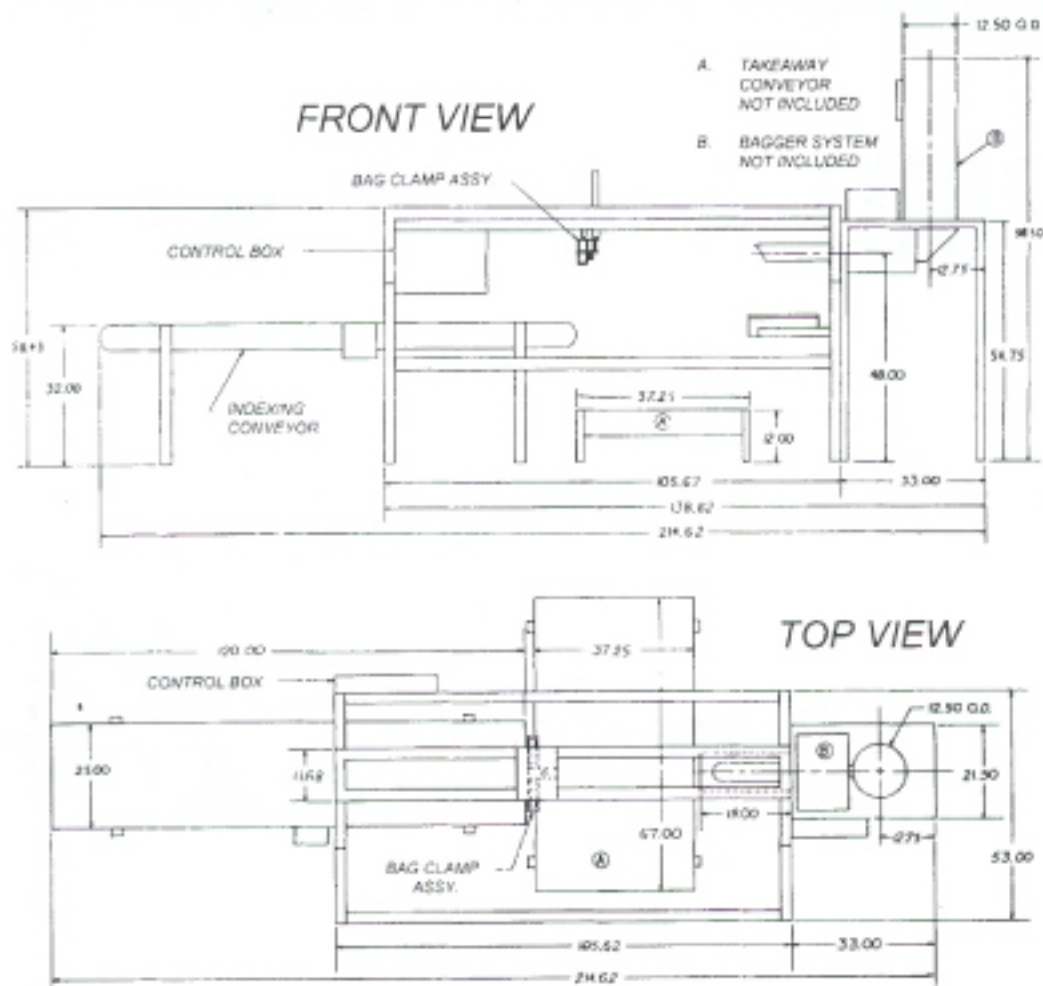
2362 Warren Ave.
Twin Falls, ID 83301
mail@huntsmanc.com

Ph. (208) 733-2214
Toll Free: (888) 812-3377
Fax: (208) 733-2240

PACKERS • CONVEYORS • PALLETIZERS • SYSTEMS

SPOUT-A-MATIC

MODEL 4227



STANDARD SPECIFICATIONS:

- **CONSTRUCTION:** heavy-duty formed and welded mild steel with one coat industrial primer and one coat enamel.
- **SPEED:** up to 7 bags per minute
- **BAG CAPACITY:** approximately 250 bags, depending on bag size
- **ROTARY VANE VACUUM PUMP:** 3/4 hp oil-less pump, includes muffler and filter, thermotector protection
- **INDEXING CONVEYOR:** 10 ft long with 1/2 hp TEFC motor
- **NEMA 12 electrical controls on the indexing conveyor**

OPTIONS

- Two-part epoxy paint
- Longer indexing conveyor is available for greater empty bag capacity
- **UTILITY REQUIREMENTS:**
Electrical: 230 v, 3 ph, 60 hz
Pneumatic: 17 cfm @ 80 psi
- **SHIPPING WEIGHT:** 1075 lbs – single spout system
- **CRATE DIMENSIONS:** 5' w x 11' l x 5' h – single spout system

HUNTSMAN, INC
Packaging, Processing and Dust Control

2362 Warren Ave.
Twin Falls, ID 83301
mail@huntsmanc.com

Ph. (208) 733-2214
Toll Free: (888) 812-3377
Fax: (208) 733-2240