



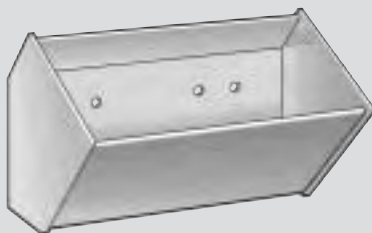
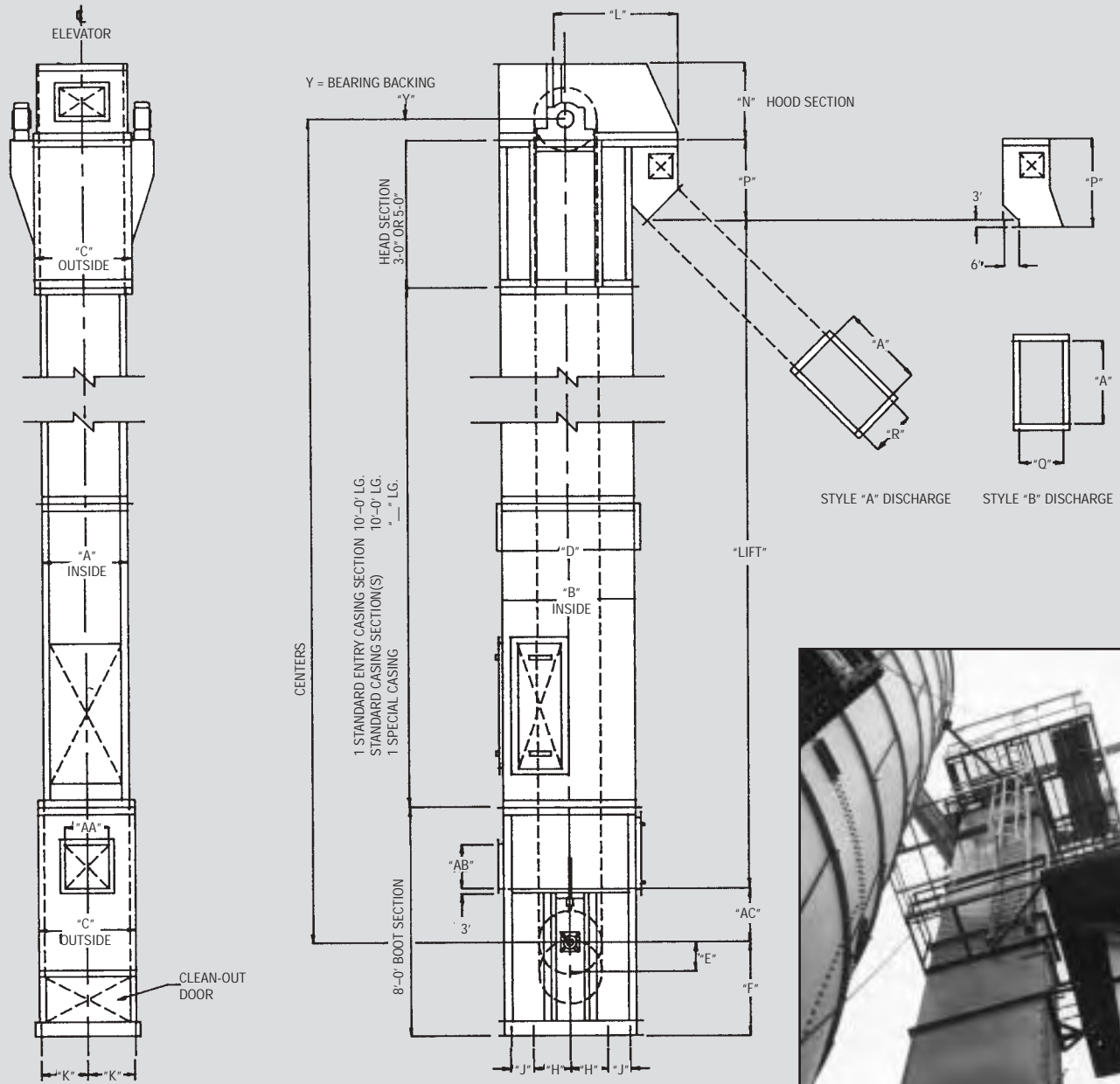
# Bucket Elevators For Mill Duty and Super Capacity Service



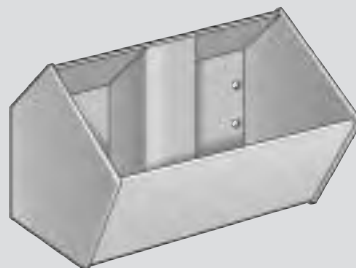
**THE EXPERIENCE  
TO HANDLE IT RIGHT!**

## Screw Conveyor Corporation

## MILL DUTY BUCKET ELEVATOR



**AC Bucket**



**ACS Bucket**



Mill Duty Bucket Elevator at a leading cement manufacturer.

# Engineered For Continuous Reliable Service

## MILL DUTY SPECIFICATIONS

	ELEVATOR NUMBER	CASING NUMBER	CHAIN SPEED (FPM)	CUBIC FEET PER HR.	CAPACITY (TONS/HR) *			
					WEIGHT OF MATERIAL PER CU. FT.			
					50 LB.	65 LB.	80 LB.	100 LB.
STYLE AC	M12826	2056	260	2000	50	65	80	100
	M12826H	2056	260	3100	75	100	120	150
	M16826	2456	260	4400	110	140	175	220
	M181026	2664	265	7300	180	235	290	360
	M181026H	2664	265	7300	180	235	290	360
STYLE ACS	M161226	2456	285	8000	200	260	320	400
	M161226H	2456	285	8000	200	260	320	400
	M181226	2656	285	9000	225	290	360	450
	M181226H	2656	285	9000	225	290	360	450
	M161430	2464	315	10000	250	325	400	500
	M181430	2664	315	12000	300	390	480	600
	M211430	3064	315	14000	350	455	560	700
	M241430	3464	315	17000	425	550	680	850

\* BASED ON BUCKETS FILLED TO 75% (WATER LEVEL) OF THEORETICAL CAPACITY HANDLING FREE-FLOWING FINES UP TO 2" LUMPS

## DIMENSIONS (INCHES)

CASING NUMBER	INSIDE DIMENSIONS A X B	C	D	ADJ. E	F	H	J	K	L	N	P	Q	R	AA	AB	AC
2056	20 X 55 1/2	25 1/4	60 1/2	12	39	16 1/4	9	10	53 1/2	35	43	18	18	8	16	15
2456	24 X 55 1/2	29 1/4	60 1/2	12	39	16 1/4	9	12	53 1/2	35	43	18	18	11	20	15
2656	26 X 55 1/2	31 1/4	60 1/2	12	39	16 1/4	9	13	53 1/2	35	43	18	18	12	20	15
2464	24 X 64	29 1/4	69	12	43	20 1/2	9	14	57 1/4	41	49	18	18	11	20	15
2664	26 X 64	31 1/4	69	12	43	20 1/2	9	15	57 1/4	41	49	18	18	12	20	15
3064	30 X 64	35 1/4	69	12	43	20 1/2	9	17	57 1/4	41	49	18	18	14	22	15
3464	34 X 64	39 1/4	69	12	43	20 1/2	9	19	57 1/4	41	49	18	18	16	24	15

## SUPER CAPACITY SPECIFICATIONS

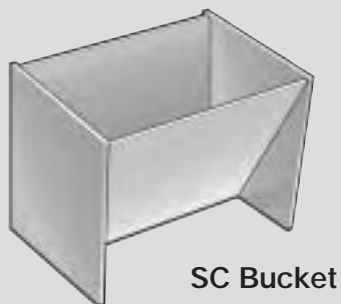
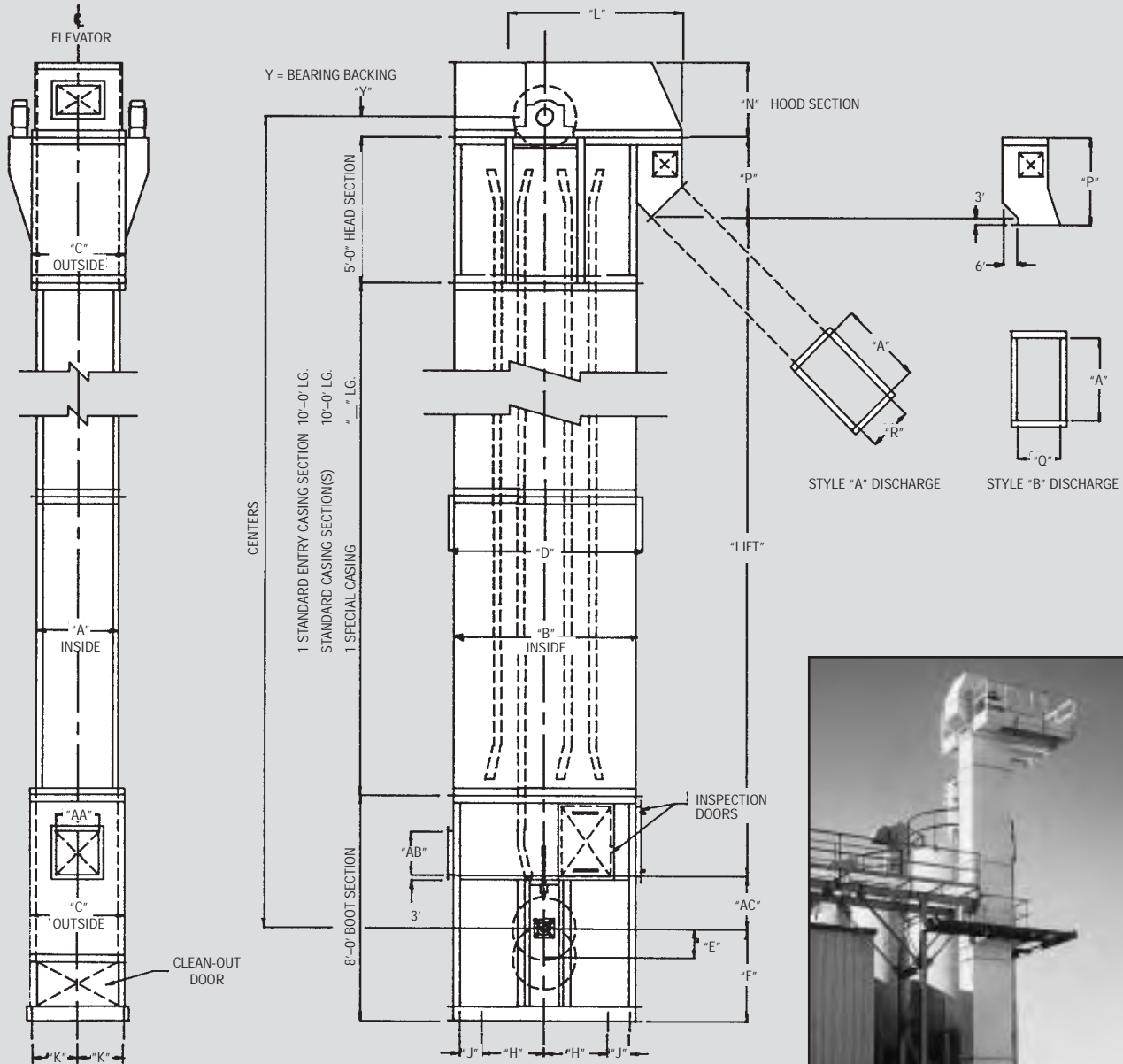
ELEVATOR NUMBER	CASING NUMBER	CHAIN SPEED (FPM)	CAPACITY (TONS/HR) *		
			WEIGHT OF MATERIAL PER CU. FT.		
			50 LB.	75 LB.	100 LB.
SC-12831	2654	100	55	85	110
SC-14831	2854	100	65	100	130
SC-16831	3054	100	75	110	145
SC-18831	3254	100	85	125	165
SC-20831	3454	100	95	150	185
SC-161229	3160	120	135	200	270
SC-201229	3560	120	170	250	340
SC-241229	3960	120	200	315	400
SC-301229	4560	120	250	375	500
SC-361229	5160	120	300	450	600

\* BASED ON BUCKETS FILLED TO 75% OF CAPACITY AND SPEED AS NOTED.

## DIMENSIONS (INCHES)

CASING NUMBER	INSIDE DIMENSIONS A X B	C	D	ADJ. E	F	H	J	K	L	N	P	Q	R	AA	AB	AC
2654	26 x 54	33 1/4	59	12	38	15 1/2	9	15	45 1/4	31	33	18	18	10	18	22
2854	28 x 54	35 1/4	59	12	38	15 1/2	9	16	45 1/4	31	33	18	18	12	18	22
3054	30 x 54	37 1/4	59	12	38	15 1/2	9	17	45 1/4	31	33	18	18	14	18	22
3254	32 x 54	36 1/4	59	12	38	15 1/2	9	18	45 1/4	31	33	18	18	16	18	22
3454	34 x 54	41 1/4	59	12	38	15 1/2	9	19	45 1/4	31	33	18	18	18	18	22
3160	31 x 60	38 1/4	65	12	45	18 1/2	9	17 1/2	48 1/4	38	37 1/2	18	18	14	18	36
3560	35 x 60	42 1/4	65	12	45	18 1/2	9	19 1/2	48 1/4	38	37 1/2	18	18	18	18	36
3960	39 x 60	43 1/4	65	12	45	18 1/2	9	21 1/2	48 1/4	38	37 1/2	18	18	22	18	36
4560	45 x 60	51 1/4	65	12	45	18 1/2	9	24 1/2	48 1/4	38	37 1/2	18	18	28	18	36
5160	51 x 60	58 1/4	65	12	45	18 1/2	9	27 1/2	48 1/4	38	37 1/2	18	18	34	18	36

# SUPER CAPACITY BUCKET ELEVATOR



Super Capacity Bucket Elevator at an innovative recycling facility.



## GENERAL SPECIFICATIONS

### MILL DUTY AND SUPER CAPACITY BUCKET ELEVATORS

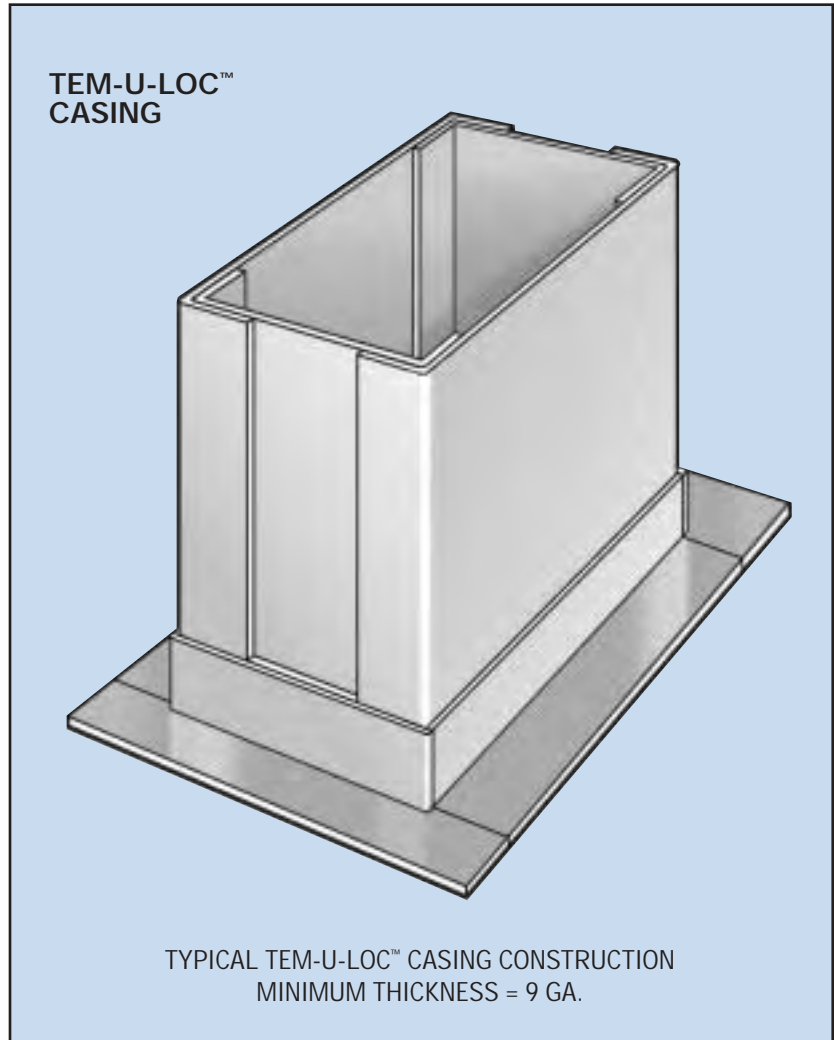
The M/S intermediate Tem-u-loc™ casing design provides for the strength normally found in corner angle panel construction casings. By virtue of this construction we not only maintain the strength, but gain many positive features such as:

- Rugged design with good looks.
- Exterior welds are minimized -- less chance for leakage.
- Rounded inside corners reduce material build-up.
- Continuous, reliable service.
- Extra-heavy, fixture positioned angle end flange frames, continuously seal welded, assure proper alignment in field erection.



#### Mill Duty Elevators -- Centrifugal Discharge

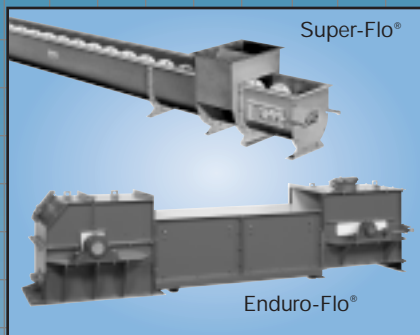
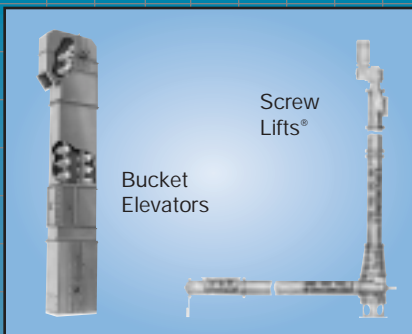
These elevators developed primarily for use in the Cement Industry can also be used for handling many other products in similar abrasive applications. Two styles of buckets are used -- the AC Bucket which has a flat back and the ACS Bucket which has a saddleback design where the buckets wrap around the chain sides. Both of these buckets have hooded backs which allow continuous spacing. Both buckets will handle free-flowing materials up to a 2" size lump.



#### Super Capacity Elevators -- Continuous Discharge

These elevators provide an expansion of our Industrial Series COB and COC Continuous Bucket elevator lines. These Super Capacity units are designed to elevate large volumes of heavy and/or abrasive materials. These products can range from fines to large lumps with densities up to 100 pounds per cubic foot. Heavy steel buckets (minimum # 10 ga.) are mounted between two strands of roller chain with rear of buckets extending back of the chain centerline thus affording greater carrying capacity. Roller chain is contained by extra heavy duty track angle guides.

# EXPERIENCE IN MOTION



For Over 70 Years We Have Been A Dependable Source For  
Performance Proven Industrial Bulk Material Handling Equipment.  
Put Our Experience to Work for You.



THE EXPERIENCE  
TO HANDLE IT RIGHT!®

## Screw Conveyor Corporation

**HUNTSMAN, INC**  
*Packaging, Processing and Dust Control*

2362 Warren Ave.  
Twin Falls, ID 83301  
mail@huntsmancorp.com

Ph. (208) 733-2214  
Toll Free: (888) 812-3377  
Fax: (208) 733-2240